

PREMIER ISSUE! ★ **26** FRESH, NEW PROJECTS YOU'LL LOVE TO STITCH!

Plastic Canvas

And More...

• Cross-Stitch • Duplicate Stitch • Embroidery •

April 1993

**BRIGHTEN
YOUR KITCHEN!**

Sparkling Apple Dinette Set

● All About 14-Count
Plastic Canvas

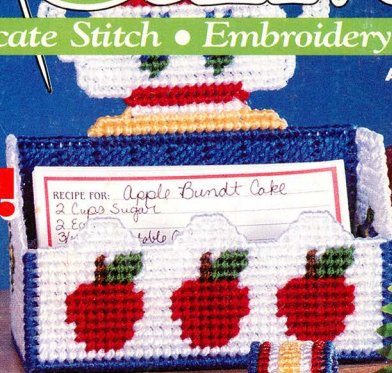
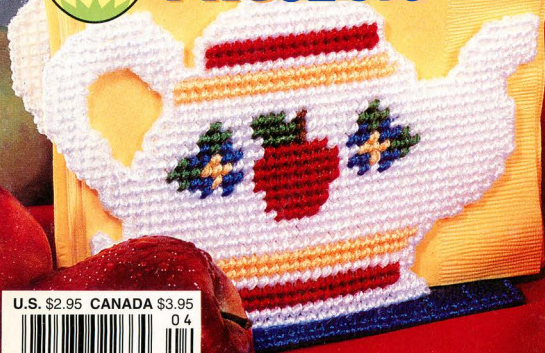
See Page 13

FOR MOTHER'S DAY...

Stitch a Gift
She'll Treasure!



**EASY
EASTER
PROJECTS**



RECIPE FOR: Apple Bundt Cake
2 Cups Sugar
2 Eggs
3/4 cup Oil
1/2 cup Vanilla



Handy
Tulip Tote Plus Eyeglasses
Case & Key Ring

Fast and Fun Duplicate Stitch!

U.S. \$2.95 CANADA \$3.95

04



Plastic Canvas And More...

• Cross-Stitch • Duplicate Stitch • Embroidery •

In this issue ...

Plastic Canvas

5 Baskets of Easter Fun

Fill with Easter treats for kids.

8 Pastel Treasures

Lovely keepsake photo frame and jewelry box.

11 Windblown Tulips

Handy tote bag plus eyeglass case and key ring.

13 Crafting Horizons

Tips and techniques for 14-count plastic canvas.

13 Decorator Magnets

Try these to discover the versatility of 14-count canvas.

15 Pearly Pink Jewelry Set

Easy yet elegant leaf-shaped jewelry.

19 Apple Dinette Set

Stitch this cheery set to brighten your table.

28 Easter Party Set

Giant Easter egg place mat with matching baskets.

31 Spring Basket Bunny

Adorable little bunny holds a basketful of flowers.

Duplicate Stitch

22 Fantasy Rose Sweater

Beautiful design, wonderful colors, easy to make.

Cross-Stitch

27 Garden Rose Bouquet

This classic floral set will make a splendid gift.

PAGE
7



PAGE
22



PAGE
27

Editorial Director Vivian Rothe
Associate Editor Laura Scott
Copy Editors Nora Costlow
 Coylea Gerig
 Cathy Reef
Production Artists Patricia Elwell
 Steve Smith
Production Assistants Marty Thieme
 Christy Zurcher
Production Coordinator Sandra Ridgway
Art & Design Eric Shawver
 Shaun Venish
Photography Rhonda Davis
 Tammy Christian
 Nora Elssner
Photography Assistants Cheryl Dunning
 Linda Quinlan

Publishers Carl H. Muselman
 Arthur K. Muselman
Chief Executive Officer John Robinson
Marketing Director Scott Moss
Circulation Manager Carole Butler
Newsstand Consultant Angelo Gando

Promotions & Advertising Manager Claudia Claussen
Advertising Nancy Ellinger
Representatives Michelle Keener
Advertising Coordinator Carolyn Shoaf
Advertising Assistant Ronda Bollenbacher
Classified Advertising Sheryl Berry
 (800) 347-2472 306 East Parr Road
 (219) 589-8741 Berne, IN 46711

Customer Service Lynn Zurcher
 (800) 347-9887 (219) 589-8741

PLASTIC CANVAS AND MORE is published bimonthly by House of White Birch, 306 East Parr Road, Berne, IN 46711. Telephone (219) 589-8741. Printed in USA. Copyright © 1993 House of White Birch.

SUBSCRIPTIONS: \$12.97 per year in USA, US \$17.77 in Canada. Please send all subscription-related correspondence to Plastic Canvas and More, P.O. Box 420235, Palm Coast, FL 32142. To change your address, send your current mailing label along with your new address as soon as possible. Allow six weeks for address changes.

NEWSSTAND DISTRIBUTION: For Retail Display Allowance information, contact Curtis Circulation Co., 433 Hackensack Ave., Hackensack, NJ 07601, (201) 907-5500, Fax (201) 896-7622.

RETAILERS: If you are not presently being provided copies of this magazine by your area newsstand wholesaler, contact Conceptions Unlimited, direct account: (800) 435-6003.

CONTRIBUTORS: Please send all manuscripts to Plastic Canvas and More, 306 East Parr Road, Berne, IN 46711. Publishers assume no responsibility for return or safety of unsolicited materials. Every effort is made to return submissions if accompanied by return postage.

Responsibility for advertised products lies with the advertisers. Plastic Canvas and More will not knowingly publish fraudulent materials and is not liable for any damages arising from the purchase or use of any products. If you have any consumer complaints concerning goods purchased from our advertisers, please send us written notification along our screening process.

POSTMASTER: Send change of address to Plastic Canvas and More, P.O. Box 420235, Palm Coast, FL 32142.

Welcome!

We're thrilled to bring you our premier issue of *Plastic Canvas and More!* Plastic canvas is one of today's hottest new crafts—it's easy to stitch with a wonderful range of creative designs. You'll find a delightful array of projects, from quick and easy patterns to more challenging designs that you'll treasure for years. Our Stitch Guide gives you step-by-step diagrams to help you create top-quality craft projects.

Being the typical crafters that we are—hooked on several crafts, all at the same time—we also wanted to include for you several cross-stitch and duplicate stitch designs. If you've been a devoted fan of plastic canvas for many years, we know you'll enjoy these related crafts too. They're easy to pick up, and most use stitches similar to the plastic canvas old faithful, the Continental Stitch.

We want to encourage you to keep on expanding your crafting horizons—new crafts, new stitches, new techniques! Be sure to check our "Crafting Horizons" every issue, where we'll be spotlighting new products with techniques on how to best use them. For this issue we asked professional designer Carol Krob to give us tips on working with 14-count plastic canvas. You can find this feature on page 14. We've also included several terrific projects designed especially for 14-count canvas so you can try your hand at this creative craft.

You'll find those fresh, new plastic canvas patterns you've been looking for in the coming issues of *Plastic Canvas and More*—fun-to-make gift ideas for family and friends, festive holiday projects, pretty and practical items for you and your home and much more.

Until next time, happy stitching!

STITCH GUIDE

Getting Started

Plastic canvas projects in this issue are worked on either 7-count, 10-count or 14-count plastic canvas. It comes in a variety of colors, sizes and shapes, and even varies in flexibility. Cross-stitch projects are worked on a wide variety of counts, colors and types of fabrics. "Count" indicates how many squares per inch.

Plastic canvas and cross-stitch supplies are available at most needlecraft shops and craft stores. You can use any worsted weight or plastic canvas yarn for most plastic canvas projects. To prevent fraying, work with 24" pieces of yarn. Stitching with raffia straw, metallic cord or ribbon will give your project a brand-new look.

Small-mesh canvas and cross-stitch cloth can be stitched with embroidery floss, pearl cotton, metallic braids and other threads. A #16 or #18 tapestry needle is needed for plastic canvas stitching: a #20 to #26 embroidery needle is needed for cross-stitching and embroidery.

Stitching Your Project

Begin stitching by pushing the threaded needle up through the canvas. Pull yarn through, leaving a 1½" tail on the back. Hold the tail in place while making the first few stitches, working over it as you stitch. Tie the knots as they usually show through to the right side and make your project bumpy and

uneven. Continue stitching according to instructions, keeping an even tension.

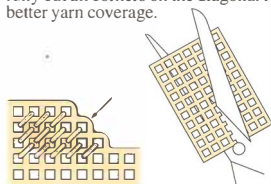
When ending a strand of yarn or a color, turn canvas or cloth over and weave the yarn through the back of your last several stitches. Trim close to your work.

These instructions also apply to cross-stitch, duplicate stitch, embroidery and needlepoint.

Cutting the Canvas

Graphs included with each pattern show the shape of the pieces when they are cut out. Also noted with each graph are the number of holes (length and width) for each piece of the project. Cut each piece in the spaces between the bars to match the graph (see cutting diagram below).

If you prefer, mark the outline of the item with a crayon or marker before you begin. Use scissors, craft cutters or a craft knife to cut the canvas. Trim off all rough edges before you begin to stitch. Be very careful not to cut the bars. Carefully cut all corners on the diagonal for better yarn coverage.



Crochet Stitches

Abbreviations

Chain or Chains	_____	ch/chs
Double Crochet	_____	dc
Half Double Crochet	_____	hdc
Loop or Loops	_____	lp/lps
Single Crochet	_____	sc
Slip Stitch	_____	sl st
Yarn Over	_____	yo

Single Crochet (sc): Draw up lp in

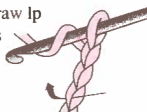
2nd ch from hook, yo,
draw through both
lps on hook.



Half Double Crochet (hdc): Yo, insert hook in next st, yo, draw lp through, yo, draw through all 3 lps on hook.



Double Crochet (dc): Yo, insert hook in next st, yo, draw lp through all 3 lps on hook.

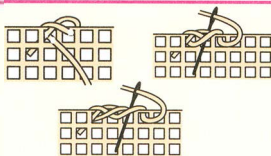


Chain (ch): Yo, draw hook through lp.



Braided Cross-Stitch

Used to beautifully finish 1 edge or to join 2 pieces of canvas together, giving a braided look.



NEEDLECRAFTER'S NOOK

You'll find most of the craft products used in this issue at your local craft or needlework shop. Most craft shop owners are also willing to special-order out-of-stock supplies. However, if you cannot find a product locally, refer to the following addresses for mail order or retail availability information.

Page 15

Pearly Pink Jewelry Set

• To order metallic yarn, write to: Rainbow Gallery, 7412 Fulton Ave., North Hollywood, CA 91605. To order cabochons, write to: The Beadery, P.O. Box 187, Hope Valley, RI 02832. Jewelry findings, beads and metallic ribbon are available through Carol's Creations, 840 N. Summit St., Dept. PCM, Iowa City, IA 52245. Send \$1 (refundable) for catalog.

Page 22

Fantasy Rose Sweater

• To order a Lands End

Women's Drifter sweater, contact: Lands End, 5 Lands End Ln., Dodgeville, WI 53595, (608) 935-4633.

Page 27

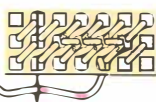
Garden Rose Bouquet Set

• To order the 5" porcelain box and/or the 3" round handbag mirror, please send check or money order to: Heritage Needleart Design, 2244 S. Milwaukee St., Denver, CO 80210. The porcelain box sells for \$39, and the handbag mirror for \$25. Please allow six to eight weeks for delivery.

Embroidery Stitches are used for adding detail and are usually stitched on top of a completed area.

Backstitch & Straight Stitch

Stitches can be any length and go in any direction. Straight stitches do not touch each other.



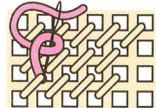
Cross-Stitch

Two diagonal stitches over 1 intersection as shown. Half-cross stitch is 1 diagonal stitch.



French Knot

Bring up needle in center of space, wrap yarn or floss around twice. Insert needle back through same hole and pull through, being careful not to pull knot through too.



Lazy Daisy Stitch

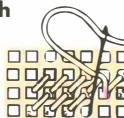
Bring needle up and go back down in same hole, leaving a small loop on right side. Come up again in a different hole for top of stitch, go through loop, and go back down in same hole.



Plastic Canvas Stitches

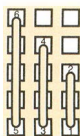
Continental Stitch

Work horizontal rows, bringing needle up at odd numbers and down at even numbers. Stitch from right to left on first row, then from left to right on 2nd.



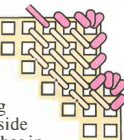
Long Stitch

Parallel straight stitches, can be of varying lengths covering 2 or more bars.



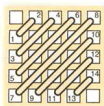
Overcast Stitch & Whipstitch

Used to finish edges (overcast) and to join 2 pieces of canvas (whipstitch). Make 1 stitch in each hole along straight edges and in inside corners, and 2 or 3 stitches in outside corners for complete coverage.



Scotch Stitch

Stitched into a square shape, this stitch is useful for filling in large areas of canvas.



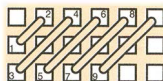
Smyrna Cross

Large cross (over 2 diagonal mesh) with upright cross (over 2 horizontal and 2 vertical mesh) on top.

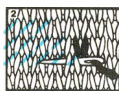


Slanting Gobelin Stitch

Worked over 2 or more intersections, this is a long, diagonal stitch.



Duplicate Stitch





Baskets of Easter Fun

You'll have as much fun stitching these cute baskets as the kids will using them! When filled with Easter goodies, they'll make a terrific surprise gift!

By Vicki Blizard

Jelly Bean Basket

Materials

- #18 tapestry needle
- #22 tapestry needle
- ½ sheet 7-count plastic canvas*
- Hot-glue gun* and glue sticks
- 12" ¼" light yellow satin ribbon
- Plastic canvas yarn*:
 - 27 yards baby yellow #21
 - 27 yards white
 - 5 yards medium yellow #727
 - 2 yards medium lavender #553
 - 2 yards sail blue #799
 - 2 yards sea green #993
 - 2 yards medium rose #899
 - 2 yards medium coral #352
- 6-strand embroidery floss*:
 - 1 skein sail blue #799

*Sample was made with Darice plastic canvas, Needleloft plastic canvas yarn, DMC Pearl Cotton, DMC embroidery floss and a Black & Decker Thermogrip glue gun.

Instructions

1. From 7-count plastic canvas, cut two 34 x 34-hole pieces for basket's long sides. Cut two 20 x 14-hole pieces for basket's short sides. Cut one piece 34 x 20 holes for basket bottom.
2. For jelly bean ribbon, cut from 10-count plastic canvas two 32 x 9-hole pieces and two 52 x 9-hole pieces. Cut

one 109 x 9-hole piece for handle. Cut 24 jelly beans according to graph.

3. With baby yellow yarn, Continental-Stitch basket sides. Whipstitch side pieces together using baby yellow throughout. Whipstitch unstitched basket bottom to assembled basket sides. Overcast top edge of assembled basket.

4. With white pearl cotton, Continental Stitch all ribbon pieces and handle. Whipstitch ribbon pieces together with white. With sail blue embroidery floss, Backstitch line and words on long ribbon pieces as shown on graph. Backstitch line on short ribbon pieces and basket handle with sail blue embroidery floss. Overcast ribbon pieces with medium yellow pearl cotton. Stitch four jelly beans in each color except white.

5. Slide completed ribbon over completed basket, centering from top to bottom. With glue gun, glue in place. Glue handles to center of front and back, sliding ends slightly under ribbon. Glue completed jelly beans along sides and handle of basket as shown.

6. Cut light yellow ribbon into two equal pieces. Tie each into a bow and trim ends at an angle. Glue one bow to each side of handle just above where it attaches to ribbon.

Easter Egg Basket

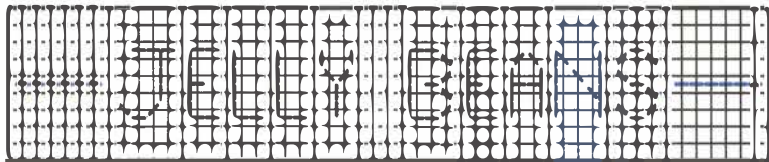
Materials

- #18 tapestry needle
- #22 tapestry needle
- ½ sheet 7-count plastic canvas*
- ¼ sheet 10-count plastic canvas*
- Hot-glue gun and glue sticks
- 1 yard ¼" light pink satin ribbon
- Plastic canvas yarn*:
 - 30 yards baby yellow #08
 - 18 yards mermaid green #53
- #3 pearl cotton*:
 - 18 yards white
 - 2 yards medium yellow #727
 - 2 yards medium lavender #553
 - 2 yards sail blue #799
 - 4 yards medium rose #899
 - 2 yards medium coral #352
- 6-strand embroidery floss*:
 - 1 skein sea green #993
 - 1 yard medium yellow #727
 - 1 yard medium lavender #553
 - 1 yard sail blue #799
 - 1 yard medium coral #351

*Sample was made with Darice plastic canvas, Needleloft plastic canvas yarn, DMC Pearl Cotton, DMC embroidery floss and a Black & Decker Thermogrip glue gun.

Instructions

1. From 7-count plastic canvas, cut two 50 x 14-hole pieces of plastic canvas for basket sides. Cut one piece as shown on



Jelly Bean Ribbon
9 holes x 52 holes
(cut 2, 10-count)



Jelly Bean
(cut 24)

Color Key

■ Sail blue
□ Uncoded area
is white

graph for basket bottom. Cut one piece as shown on graph for optional insert. Cut two 41 x 9-hole pieces for insert supports.

2. From 10-count plastic canvas, cut two 75 x 7-hole pieces for ribbon. Cut one 109 x 7-hole piece for handle. Cut four Easter eggs according to graphs.

3. With baby pink yarn, stitch basket sides in Continental Stitch, leaving one vertical row on each end of each piece unstitched. Holding unworked row of one piece behind stitched rows of second piece, Whipstitch short ends together (unstitched rows will be inside basket). Whipstitch unstitched basket bottom to assembled basket sides. Overcast top edge of assembled basket.

4. With mermaid green yarn, stitch optional insert in Continental Stitch. Overcast inside openings and around outside edge. Leaving one vertical row on each piece unstitched, stitch supports in mer-

maid green. Form a tube with right side in, holding two unworked rows together, and stitching remaining two rows through doubled plastic canvas in Continental Stitch. Overcast top and bottom edges of tubes. Glue to wrong side of insert, centered over openings. Repeat for other support.

5. With white pearl cotton, stitch all ribbon pieces and handle in Continental Stitch. Whipstitch ribbon pieces together with white. With sea green embroidery floss, Backstitch line and words on ribbon pieces as shown on graph. Backstitch line on basket handle with sea green embroidery floss. Overcast ribbon pieces with medium rose pearl cotton. Stitch four Easter eggs as shown in graphs.

6. Slide completed ribbon over completed basket, centering from top to bottom. Glue in place. Glue handles to center of each long side, sliding end slightly under ribbon. Glue one completed egg to each

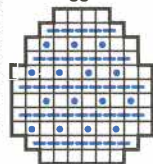
end of basket and to handle of basket as shown.

7. Cut light pink ribbon into two 6"-long pieces. Tie each into a bow and trim ends. Glue one bow to each side of handle above where it attaches to ribbon. Cut a piece of ribbon 8" long and set aside. Wrap remaining ribbon around palm, leaving 3" ends. Tie in center with 8" ribbon. Glue to center top of basket handle as shown. ☼

Basket Eggs

10 holes x 11 holes
(cut 4)

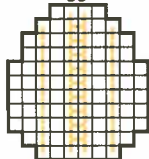
Egg 1



Color Key
Uncoded area is medium coral

Backstitch
• Sail blue
— French Knot

Egg 2



Color Key
Uncoded area is sail blue

Backstitch
— Medium yellow

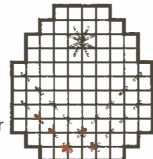
Egg 3



Color Key
Uncoded area is medium yellow

Backstitch
— Medium lavender

Egg 4



Color Key
Uncoded area is medium lavender

Backstitch
— Medium coral

Easter Egg Basket Ribbon

7 holes x 75 holes
(cut 2, 10-count)

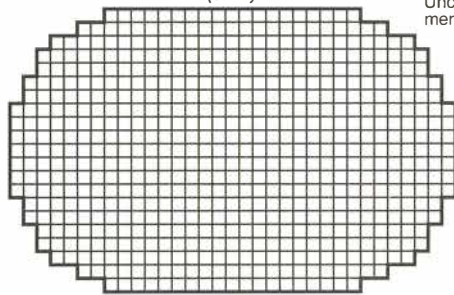


Color Key
Uncoded area is white

Backstitch
— Sea green embroidery floss

Easter Egg Basket Bottom

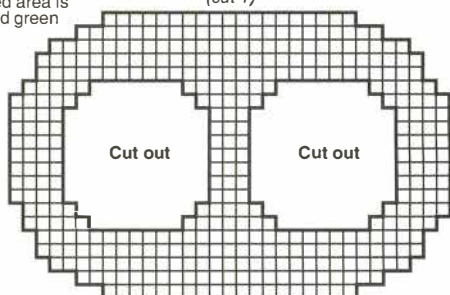
33 holes x 21 holes
(cut 1)



Color Key
Uncoded area is mermaid green

Easter Egg Basket Insert

33 holes x 21 holes
(cut 1)





PLASTIC CANVAS



Pastel Treasures

Display your favorite photograph in this pink and pearl frame while keeping your treasured jewelry tucked away in this beautiful box.

By Lilo Fruehwirth





Materials

- 2 sheets 13½" and 10½" 10-count pink plastic canvas*
- 18 skeins white Embroidery floss
- 1 yard 4mm-diameter white pearls by the yard
- 2 small white satin roses
- #18 tapestry needle
- Small scissors
- Glue*

*Sample projects were completed with Darice plastic canvas and Aleene's Thick Designer Tacky Glue.

Instructions

1. For picture frame, cut one front according to graph; one 62 x 74-hole piece for back; two 19 x 57-hole pieces for easel; one 2 x 43-hole piece for bow; and one 2 x 27-hole piece for streamers.
2. For jewelry box, cut two 38 x 38-hole pieces for the lid and bottom; four 14 x 38-hole pieces for sides for lid; four side pieces for bottom according to graph; one 2 x 43-hole piece for bow; and one 2 x 27-hole piece for streamers.
3. Using doubled embroidery floss (12 strands), stitch lid, sides of box and front of picture frame with Scotch Stitch and Cross Stitch pattern (see graphs).
4. Continental-Stitch bows and streamers.
5. Overcast edges of frame, inside frame edge and easel pieces with Braided Cross Stitch using 6-strand embroidery floss. Lay both easel pieces together and Overcast edges together with Braided Cross Stitch.
6. To assemble, Whipstitch easel to back of frame. With 6-strand floss and Braided Cross Stitch, join together the following: back and front frame; all four sides of box. Join sides to lid and bottom; Overcast lid edge with Braided Cross Stitch.
7. Whipstitch ends of bows together to form a ring. Shape bow and stitch to streamers. Glue bows to frame and lids where indicated on graph. Glue pearls by the yard in loops and streamers around bows to make a pretty arrangement. Glue satin roses in centers.

Graphs continued on page 24





Windblown Tulips

Bright pink tulips swaying in the wind decorate the tote bag, eyeglass case and key ring. Perfect for keeping your crafting supplies together, the set is as practical as it is bright.

By Darla Fanton

Tote Bag

Materials

- 2½ sheets 7-count clear stiff plastic canvas*
- 2 (9½") plastic canvas circles*
- #16 tapestry needle
- ½ yard pink lining fabric
- Worst weight or plastic canvas yarn*:
 - 140 yards white #1
 - 14 yards clover green #42
 - 12 yards apple green #41
 - 25 yards mist green #40
 - 20 yards cherry blossom pink #10
 - 45 yards candy pink #25
- RibbonFloss*
- 28 yards wine #142F-24

*Sample was completed with 7-count Darice Ultra Stiff plastic canvas and Darice circular plastic canvas; Spinrite plastic canvas yarn (#174001); and Rhode Island Textile Co. RibbonFloss.

Instructions

1. Cut two sides 89 x 70-holes from stiff plastic canvas, two ends 23 x 70-holes and one bottom 23 x 89-holes. Leave bottom unstitched or fill in with white as desired.
2. Following graphs on pages 12 and 24, stitch all Continental and Slanting Gobelin Stitches (see stitch guide on page 4 if necessary). Stitch Backstitches last, working over previous stitches.
3. For each handle (make two), cut plastic canvas circles in half along center straight bar. Use outer 6-hole rim from each half-circle. Place two half-circles together and stitch as one, using Straight Stitch with candy pink yarn. Overcast curved edges with white.
4. To make a lining, use tote sides, ends and bottom as patterns, cutting fabric ½" larger on all edges. Allowing ⅝" for seams, sew sides to ends and sew to bottom. Press top edge under ⅝".
5. Using white yarn throughout, Whipstitch ends to sides and bottom. For a prettier look, use Braided Cross Stitch when joining sides and bottom. See stitch diagram on page 4. Overcast top edge,

centering and joining handles to sides at the same time.

6. Place lining inside tote with wrong sides together. Slipstitch to top edge.

Eyeglass Case

Materials

- ½ sheet 7-count clear plastic canvas*
- #16 tapestry needle
- Worst weight or plastic canvas yarn*:
 - 15 yards white #1
 - 2 yards clover green #42
 - 2 yards apple green #41
 - 2 yards mist green #40
 - 5 yards cherry blossom pink #10
 - 5 yards candy pink #25
- RibbonFloss*:
 - 6 yards wine #142F-24

*Darice plastic canvas, Spinrite plastic canvas yarn and Rhode Island Textile Co. RibbonFloss were used to complete the sample project.

Instructions

1. Cut from plastic canvas two sides as shown.
2. Following graph, stitch all Continental and Slanting Gobelin Stitches, then Backstitch.
3. With white yarn, Overcast top edge of each piece. With wrong sides touching, Whipstitch remaining edges together with white yarn.

Key Ring

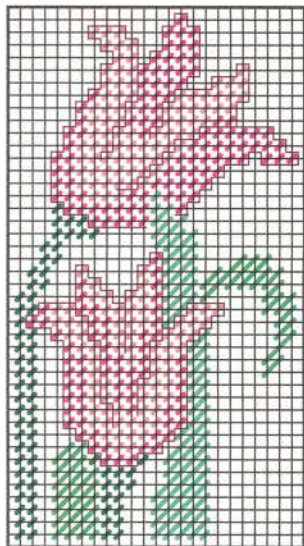
Materials

- Clear 7-count super-soft plastic canvas* (15 holes x 61 holes)
- 1½" metal split ring
- #16 tapestry needle
- Worst weight or plastic canvas yarn*:
 - 4 yards white #1
 - 1 yard clover green #42
 - 2 yards cherry blossom pink #10
 - 2 yards candy pink #25
- RibbonFloss*:
 - 3 yards wine #142F-24

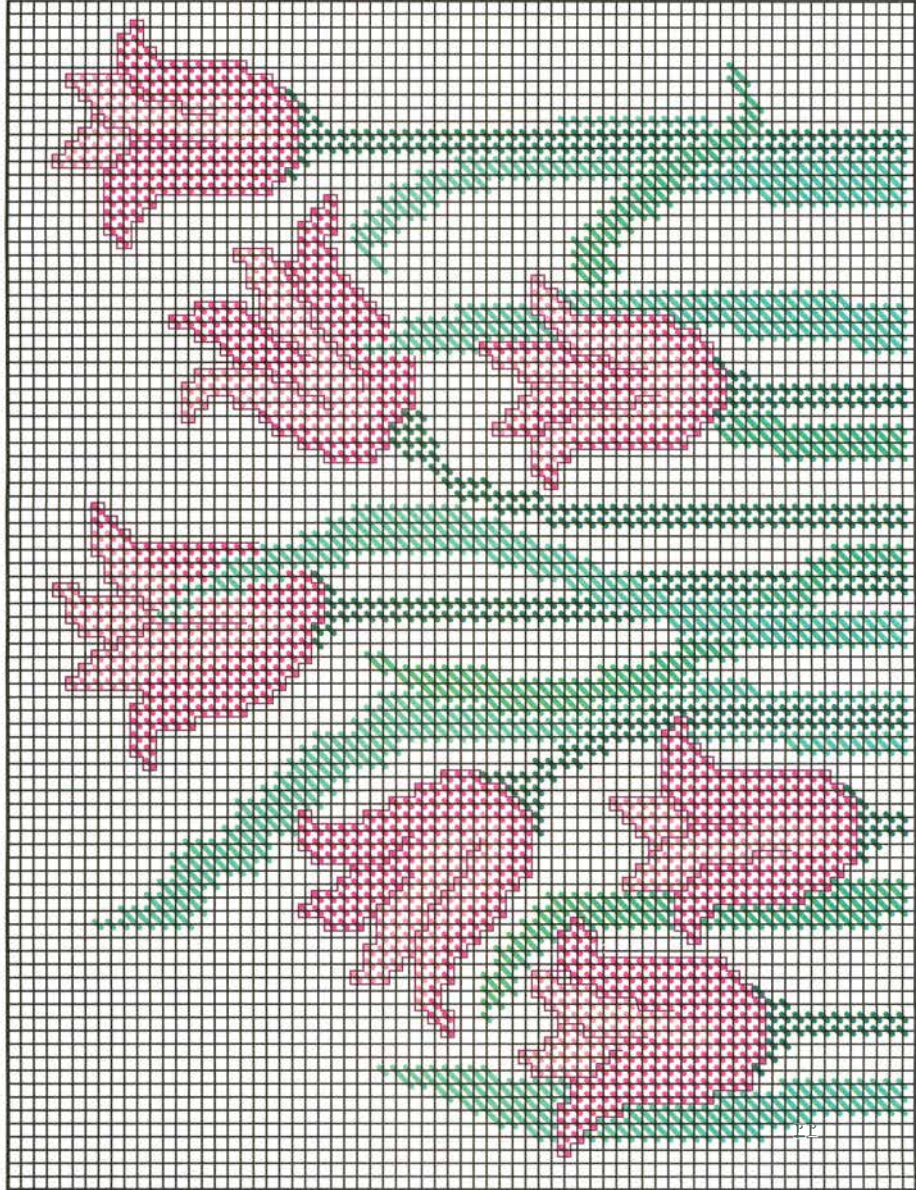
*Darice's Super Soft plastic canvas, Spinrite plastic canvas yarn and Rhode Island Textile Co. RibbonFloss used in sample.

Instructions

1. Cut from plastic canvas one piece as shown on page 24.
2. Following graph, add Continental Stitch, then Backstitch.
3. Overcast indicated edges with white.
4. Gently roll one large end of key ring and slip through metal ring until metal ring rests on narrow center strip. With wrong sides touching, Whipstitch remaining edges together with white yarn. ☼



Eyeglass Case
24 x 43 holes
(cut 2)



Windblown Tulips

Tote Side

89 x 70 holes

(cut 2)

Graphs continued on page 24

Color Key

■ Clover green
■ Apple green
■ Mist green

■ Cherry blossom pink
■ Candy pink
— Wine (backstitch)
Uncoded area is white



Crafting Horizons

Some crafters limit themselves to using only 7-count plastic canvas. Today many crafters are discovering the versatility in other types of canvas, such as this month's feature, 14-count plastic canvas.

By Carol Krob, SCD

14-Count Plastic Canvas

There's no doubt about it—plastic canvas has arrived. Fostered by a proliferation of new designs and products, its popularity has soared in recent years. Among the most exciting developments has been the introduction of 14-count canvas. Like its 7- and 10-count predecessors, it offers an ideal alternative to fabric, especially for sturdy, three-dimensional projects. Its finer mesh, however, accommodates smaller, more intricate designs.

For needlecrafters who enjoy experimenting with new techniques, this versatile product has opened up a new world of creative possibilities. But it didn't happen overnight. There was a long, anxious interval between the release of the prototype and full-scale mass production, as the manufacturer, Darice Inc., searched for the proper die cut.

The standard square grid would not work on the finer canvas, because the bars became too brittle and prone to breakage. Darice resolved the dilemma by adopting a pattern of octagonal holes and has since patented this manufacturing process. As

their catalog explains, "The extra plastic between the holes keeps the canvas strong, no matter how you need to cut or stitch it."

The size and shape of the holes closely resembles that of perforated paper. An improvement over the smaller oval holes on the original samples, they are easy to see, and wide enough to stitch with a #24 tapestry needle.

The canvas is currently available in 8¼" x 11" sheets in a range of colors including clear, ivory, white, pink, yellow, light green, orange and black. A Christmas green and a bright red are in the developmental stage. While the clear canvas is suitable for most projects, the colors can save time when you don't want to fill in the background or overcast edges.

Like perforated paper and even-weave vinyl, the 14-count canvas can be cut to almost any size and shape—with no raveled edges. Its superior strength and durability make it a better choice for items like jewelry and bookmarks.

As illustrated by the set of Decorator Magnets, it lends itself beautifully to a wide variety of stitches and threads: ⅝"

metallic ribbon, embroidery floss, RibbonFloss, metallic yarn, pearl cotton and metallic braid. Best of all, the 14-mesh grid makes it a perfect ground for counted bead embroidery.

If you haven't explored the potential of the products featured here, you're in for a real treat. Use the suggested colors or substitute your own—and try working each design with different types of threads. You can also adapt many of your favorite cross-stitch charts to plastic canvas, providing they don't involve ¼ or ⅓ stitches.

The more you work with 14-count plastic canvas, the more creative and innovative you will become. The enthusiasm of designers and manufacturers—and stitchers like you—signals a bright future for this multipurpose product. Inexpensive, durable and versatile, it fills the bill for both super-simple and ultra-elegant creation. Whether your tastes run toward the quick and easy or more challenging designs, you'll discover in 14-count plastic canvas the best of all possible worlds. ☼

PLASTIC CANVAS



Decorator Magnets

Designed by Carol Krob, a longtime designer and member of the Society of Craft Designers, this set of six magnets demonstrates the versatility of 14-count plastic canvas.

See color photo on page 15

By Carol Krob, SCD

Finished Size

3" x 3" (hung diagonally)

Project Notes

1. Each design is worked on a different color square of 14-count plastic canvas, 28 x 28 holes.
2. Use a #24 tapestry needle for all stitching except beads.
3. When working with metallic ribbon, yarn or RibbonFloss, keep stitches

smooth and flat by guiding thread between thumb and forefinger of free hand.

4. Anchor threads by leaving a tail beneath canvas to catch under the first several stitches. Weave ends securely through stitching on back before clipping.

5. When stitching, use the "stab stitch" method, bringing needle straight up and straight down through canvas holes in two motions. Do not skip across unstitched areas or thread will show through empty holes.

6. Add beads, as indicated on charts, after completing all other stitching. Thread #10 crewel needle with sewing or quilting thread, and pour a few beads at a time into a shallow, rimmed container. Anchor thread by weaving through stitching on back. Attach beads individually with Half Cross Stitches: Bring needle up at lower left, pick up bead with tip, go down at upper right. If any beads appear loose, stitch through them a second time.

7. Place stitched piece on cutting surface and trim away excess canvas, following outline of design.

8. Attach ½" round magnet to reverse side.

9. Turn on diagonal to hang.

10. Other finishing options: Attach pin back to make a brooch; make a small loop near top to make pendant or ornament.

Metallic Ribbon on Clear Canvas

Materials

- 3" x 3" piece 14-count clear plastic canvas
- ⅛" metallic ribbon*: Sky blue #014HL
Sapphire #051HL
Silver #001HL
- Seed beads*—ice #2010
- 9mm dark sapphire cabochon*

*Sample project was completed with Kreinik ⅛" metallic ribbon, Mill Hill seed beads and a cabochon from The Beadery. For ordering information for these products see the NeedleCrafter's Nook on page 4.

Instructions

- With metallic ribbon, work Half Cross Stitches, Cross Stitches and Slanting Gobelin Stitches in direction and colors indicated on graph below.
- Add beads (see Project Note #6).
- Glue cabochon in center or fill in center circle with blue beads.
- Cut out design.
- Overcast edges with ⅛" silver metallic ribbon.

Embroidery Floss on Pink Canvas

Materials

- 3" x 3" piece 14-count pink plastic canvas
- 6-strand embroidery floss*: Dark violet #552
Light violet #554
- Seed beads*—Victorian gold #2011

*Sample project was completed with DMC embroidery floss and seed beads from Mill Hill. For ordering information for the seed beads, see the NeedleCrafter's Nook on page 4.

Instructions

- Using 3 strands floss for all stitches, stitch according to graph on page 21. To make Smyrna Cross, work a large Cross Stitch over two bows, then work an upright cross on top.
- Add beads (see Project Note #6).

Ribbon Floss on Yellow Canvas

Materials

- 3" x 3" piece 14-count yellow plastic canvas
- Ribbon floss: Teal blue #142F-6
Wine #142F-24
Evergreen #142F-19
- Seed beads*—Victorian gold #2001

*Sample project was completed using Mill Hill seed beads and Rhode Island Textile Co. Ribbon Floss. For ordering information, see the NeedleCrafter's Nook on page 4.

Instructions

- Stitch according to graph, on page 21.
- Add beads (see Project Note #6).

Metallic Yarn on White Canvas

Materials

- 3" x 3" piece 14-count white plastic canvas
- Metallic yarn*: Christmas green #PM54
Christmas red #PM55
- 5mm white pearl (optional)

*Sample project was completed using Rainbow Gallery plastic canvas #10 metallic yarn. For ordering information, see the NeedleCrafter's Nook on page 4.

Instructions

- Stitch according to graph on page 21.
- Put pearl in center of red stitches (optional).

Pearl Cotton on Light Green Canvas

Materials

- 3" x 3" piece 14-count light green plastic canvas
- #5 pearl cotton*: Rose #77
Pink #73
- Seed beads*—ice #2010

*Sample project was completed using Anchor pearl cotton and Mill Hill Seed beads.

Instructions

- According to graph on page 21, work Cross-Stitches, Half Cross and Slanting Gobelin Stitches.
- Add beads (see Project Note #6).

Metallic Braid on Ivory Canvas

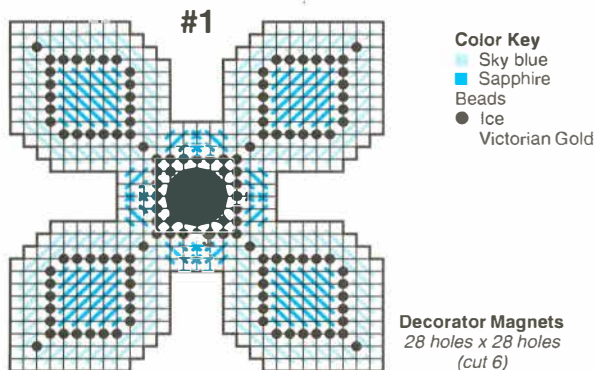
Materials

- 3" x 3" piece 14-count ivory plastic canvas
- Garnet #16 metallic braid* #080HL
- Seed beads*—Victorian gold #2011

*Sample project was completed using Kreinik #16 metallic braid and Mill Hill seed beads. For ordering information for the metallic braid and seed beads, see the NeedleCrafter's Nook on page 4.

Instructions

- According to graph on page 21, work Cross Stitches, Half Cross and Slanting Gobelin Stitches.
- Add beads (see Project Note #6). ♣
Graphs continued on page 21





PLASTIC CANVAS

Pearly Pink Jewelry Set

Create delicate leaf-shaped jewelry—it's pretty enough for a bride—from easy-to-stitch designs on plastic canvas. Use our pearl, rose and crystal color scheme, or select colors of your choice. Better yet, try several variations!

By Carol Krob

Materials

- 13 x 19-hole piece 7-count pale pink or clear plastic canvas
- 1 sheet clear 14-count plastic canvas
- $\frac{1}{16}$ " metallic ribbon*: Pearl #032
Pink #007HL
- Metallic yarn*: White pearl #PC-10
Pink #PC-8
- $\frac{3}{8}$ " silver bugle beads
- Seed beads*: Old rose #553
Crystal #161
- #18 and #24 tapestry needles
- #10 crewel needle
- White quilting thread
- Pink cabochons*: 9mm round
2 (5mm) round
- Clear craft cement*
- Plastic canvas cutter
- 1 pair silver ear wires or French ear clips
- Silver neck chain* or $1\frac{1}{2}$ " pin back

*Sample project was made with Kreinik metallic ribbon, Rainbow Gallery metallic yarn, Mill Hill seed beads, a pink cabochon from The Beadery, Friendly Plastic craft cement and Slice-A-Bead Chain from Darice. For ordering information on beads, jewelry findings, 14-count plastic canvas

and Kreinik $\frac{1}{16}$ " metallic ribbon, see the *Needlecrafters' Nook* on page 4.

Pendant & Brooch

1. Thread #18 tapestry needle with white pearl metallic yarn. Work three leaf stitches on 7-count canvas according to chart on page 27. For best results, keep yarn smooth and flat. Guide it between thumb and forefinger of free hand while completing each stitch. Be careful not to pierce through yarn with tip of needle. Weave ends securely through stitching on back before clipping.

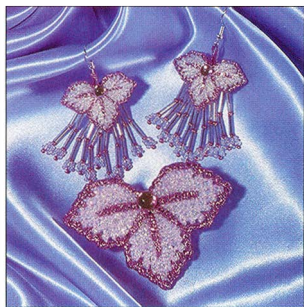
2. Place stitched piece on cutting surface and trim away excess canvas, following outline of design.

3. With pink metallic yarn, Overcast edges and add five Straight Stitches as indicated by heavy line on chart.

4. To make a pendant, make two small loops on back through which to pass neck chain.

5. To make a brooch, attach pin back slightly above center with sewing or quilting thread.

6. If desired, glue 9mm cabochon to top center where Straight Stitches converge. Press firmly with fingertips; allow glue to dry thoroughly.



7. Insert neck chain through loops for pendant.

Earrings

1. Thread #24 tapestry needle with $\frac{1}{16}$ " pearl metallic ribbon and work leaf design on 14-count canvas. Add Straight Stitches with $\frac{1}{16}$ " pink ribbon.

2. Work four identical pieces, leaving several rows between each one. Cut out designs.

3. For each earring, place two stitched

Continued on page 27

Plastic Canvas Favorites!

7-Count &
10-Count Kits





RECIPE FOR: Apple Bundt Cake
2 cups
2 eggs
2 cups



Apple Dinette Set

Take a break from spring cleaning and stitch up this three-piece set. Quaint teapots decorated with apples and flowers add springtime warmth to your kitchen or dinette.

By Michele Wilcox

Recipe Box

Materials

- 1 sheet clear 7-count plastic canvas
- Worst weight or plastic canvas yarn*:
20 yards white #41
24 yards royal #32
5 yards red #1
4 yards Christmas green #28
3 yards straw #19
1 yard cinnamon #14

*Sample project was completed with Uniekh Needloft plastic canvas yarn.

Instructions

1. For bottom, cut one 17x37-hole piece.
2. Cut sides, front and back according to graphs on this page and page 20.
3. Continental Stitch sides, front and the teapot part of the back according to graph.

Overcast top edges of both sides, front and teapot with adjacent colors.

4. Stitch bottom and remainder of back with Slanted Gobelin Stitch.
5. Whipstitch pieces together with royal blue.

Napkin Holder

Materials

- 1 sheet clear 7-count plastic canvas*
- 1 sheet white 7-count plastic canvas*
- Worst weight or plastic canvas yarn*:
4 yards red #1
24 yards white #41
4 yards straw #19
2 yards Christmas green #28
12 yards royal blue #32
1 yard cinnamon #14
- Glue gun and glue sticks*

*Sample project was completed using Uniekh Needloft yarn and a Black & Decker 2-Temp Glue Gun and glue sticks.

Instructions

1. Cut two clear teapots and two white teapots according to graph on page 21. Cut two pieces, one clear and one white, 41 x 17 holes for bottom.
2. Continental Stitch clear teapot pieces only, reversing teapot on second clear piece. Overcast bottom edges with white.
3. Overcast bottom edges of unstitched white pieces with white. Whipstitch each worked piece to one white piece with white yarn.
4. Whipstitch worked bottom piece to white bottom piece with royal.
5. To glue teapot in place, spread the base of each teapot, apply glue to each bottom side and center. This will give the piece extra stability.

Basket

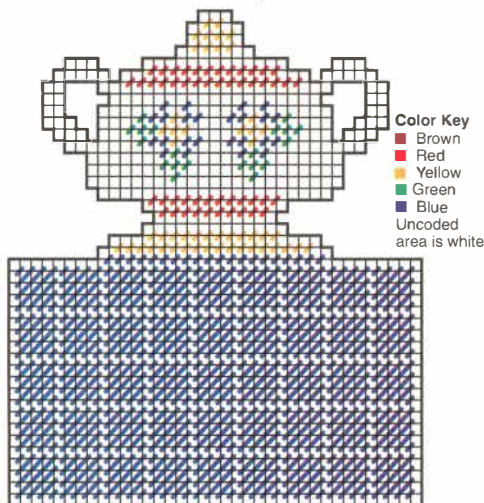
Materials

- 1 sheet clear plastic canvas
- Plastic canvas yarn*:
27 yards red #1
22 yards white #41
4 yards Christmas green #28
20 yards straw #19
1 yard cinnamon #14
10 yards royal #32
- Glue gun and glue sticks*

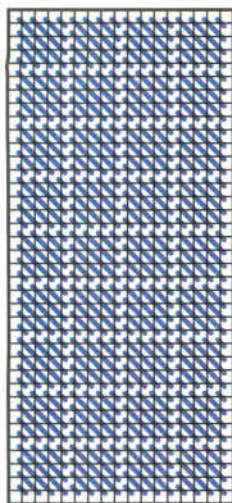
*Sample project was completed using Uniekh Needloft plastic canvas yarn and a Black & Decker 2-Temp Glue Gun and glue sticks.

Instructions

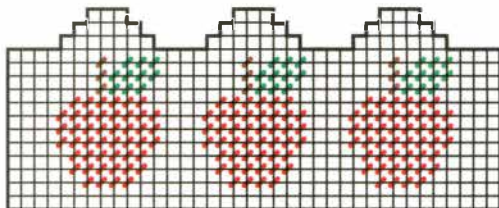
1. Cut and stitch following graphs.
2. Cut bottom piece 19 x 35 holes and work as shown on partial graph.
3. Whipstitch together with royal blue yarn.
4. Overcast top opening with blue. Overcast around handle with blue and glue handle in place.
5. Center the handle and glue 1/2" of each end into basket. ☺



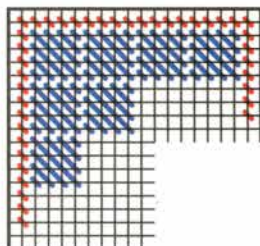
Recipe Box Back
37 holes x 42 holes
(cut 1)



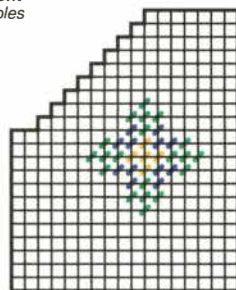
Recipe Box Bottom
17 holes x 37 holes
(cut 1)



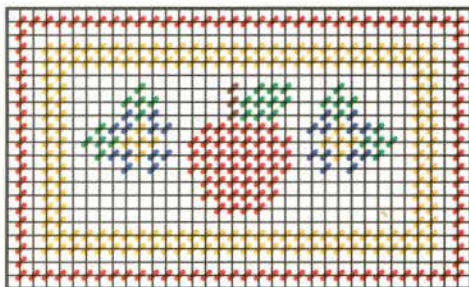
Recipe Box Front
37 holes x 15 holes
(cut 1)



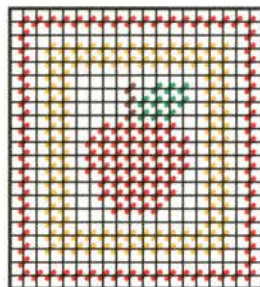
Basket Bottom
19 holes x 35 holes
(cut 1)



Recipe Box Side
17 holes x 21 holes
(cut 2)



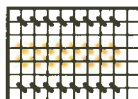
Basket Front & Back
21 holes x 35 holes
(cut 2)



Basket Side
21 holes x 19 holes
(cut 2)

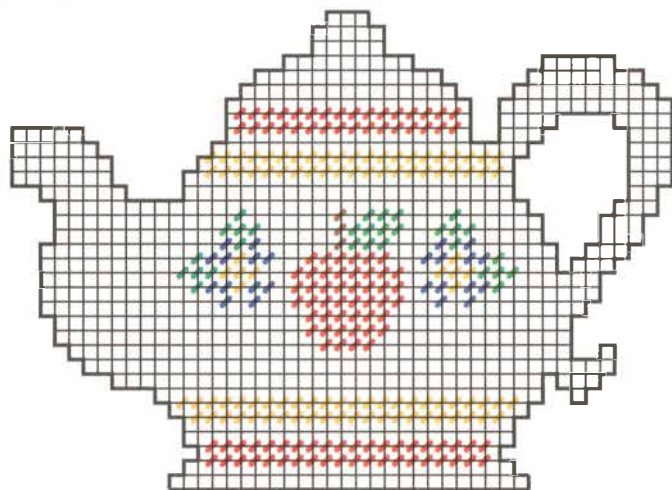


Napkin Holder Bottom
41 holes x 17 holes
(cut 2)



Basket Handle
7 holes x 70 holes
(cut 1)

Color Key
Brown
Red
Yellow
Green
Blue
Uncoded area
is white



Teapot
44 holes x 33 holes
(cut 4: 2 clear, 2 white)

Color Key
Brown
Red
Yellow
Green
Blue
Uncoded area
is white

Decorator Magnets

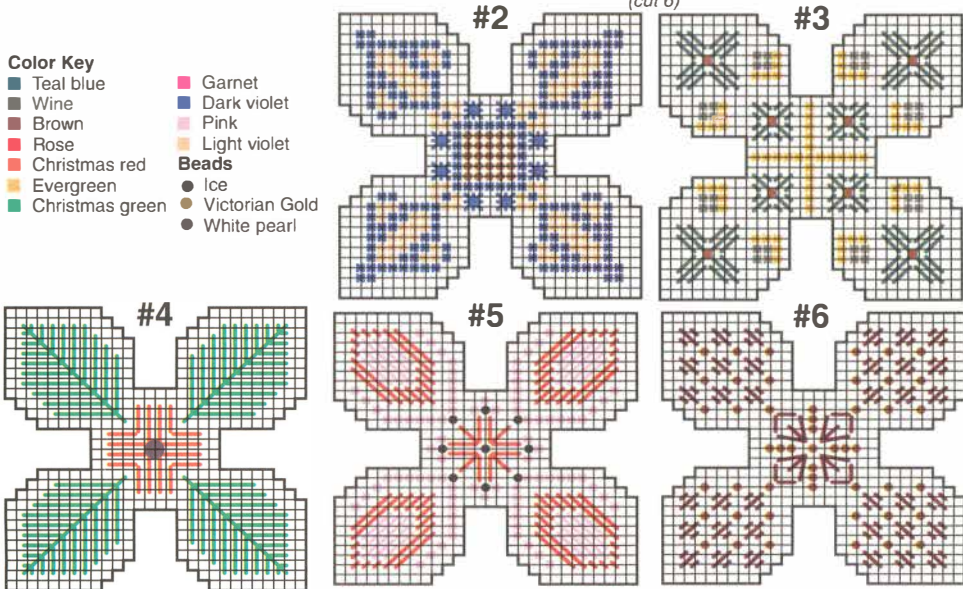
Continued from page 14.

Color Key

- Teal blue
- Wine
- Brown
- Rose
- Christmas red
- Evergreen
- Christmas green
- Garnet
- Dark violet
- Pink
- Light violet
- Beads**
 - Ice
 - Victorian Gold
 - White pearl

Decorator Magnets

28 holes x 28 holes
(cut 6)





Fantasy Rose Sweater

Duplicate stitch is an easy way to make a plain sweater beautiful and unique.

Why not learn a new technique and make a striking gift, for Mom or yourself, at the same time!

By Nancy Connolly

Gauge

7 x 10 V-stitches to the inch

Materials

- 6-strand embroidery floss*:
2 skeins each—light carnation #894, dark blue green #991, light blue green #964
1 skein each—dark carnation #892, medium carnation #893, medium blue green #958, medium periwinkle #340, light periwinkle #341, cream #712
- Woman's white stockinette-stitch sweater*
- #22 tapestry needle
- Embroidery scissors

*Sample was completed using DMC

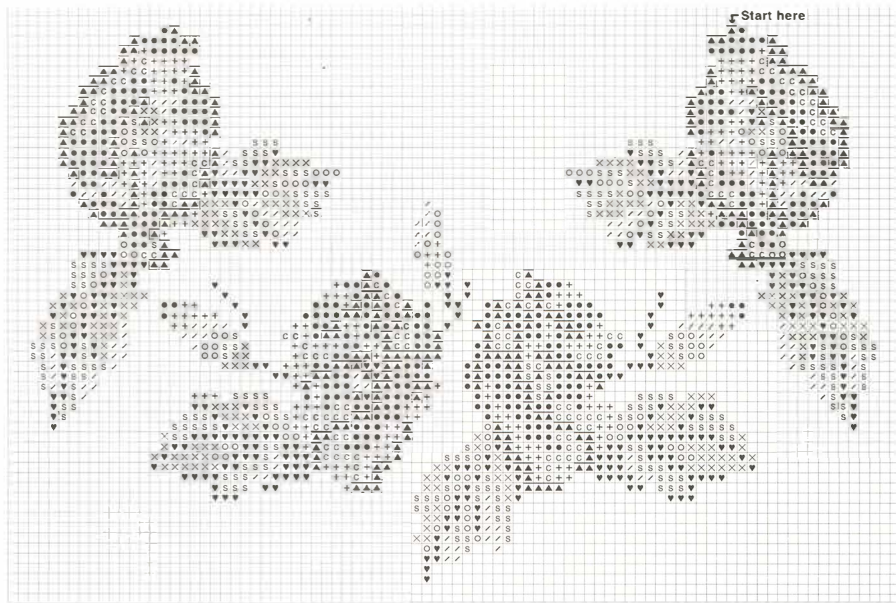
embroidery floss and a Lands End Women's Long Sleeve Drifter Sweater (#06676216). For ordering information on a Lands End Drifter sweater, see the Needlecrafters' Nook on page 4.

Instructions

- Determine the number of strands of floss which will match the thickness of the sweater yarn. Separate strands and place them back together for the best coverage. (The 7 x 10 gauge of the sample sweater required 6 strands of floss.)
- To orient design on sweater, first determine center of sweater. About 1" under ribbing of neckline, count 25 stitches to the right (from center) and then up 19 stitches. Begin stitching with dark carnation floss where indicated on graph. **Note:**

If you use a different sweater from the sample, you might wish to use a washable marking pen to trace the upper part of the leaf to the left of this rose to be sure it will not run into the neckline.

- To anchor the floss, run it through a few stitches on the back. Bring needle up from inside of sweater and stitch as shown in stitch guide on page 4. The floss should lie over the sweater stitch without tension. A completed duplicate stitch resembles a "V." When finishing floss, anchor on the wrong side. Do not use knots.
- When stitching is complete, steam-press sweater inside out. Place a terry towel underneath the right side of design (inside sweater) and on top of the wrong side. Press with steam iron. **Note:** Never touch the stitches directly with an iron.



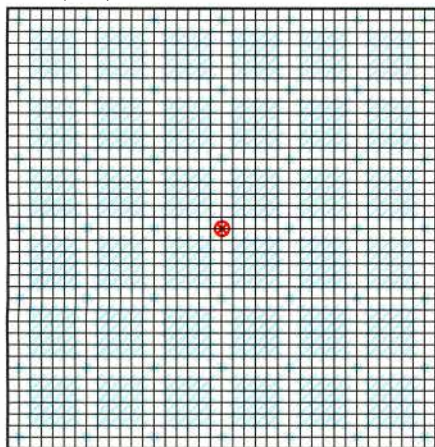
Color Key	▲ Dark carnation	● Light carnation	× Medium blue green	○ Medium periwinkle
	+ Medium carnation	♥ Dark blue green	S Light blue green	◊ Light periwinkle
				C Cream



Continued from page 9

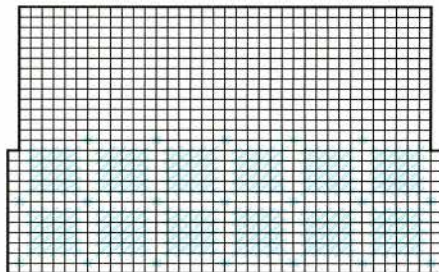
Jewelry Box Lid

38 holes x 38 holes
(cut 1)



Sides for Bottom

38 holes x 26 holes
(cut 4)



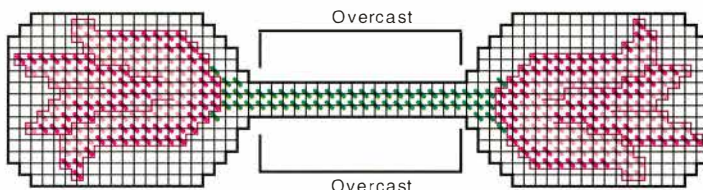
Color Key

- White
- Attach streamers and bow

Continued on page 30

Windblown Tulips

Continued from page 12



Key Ring

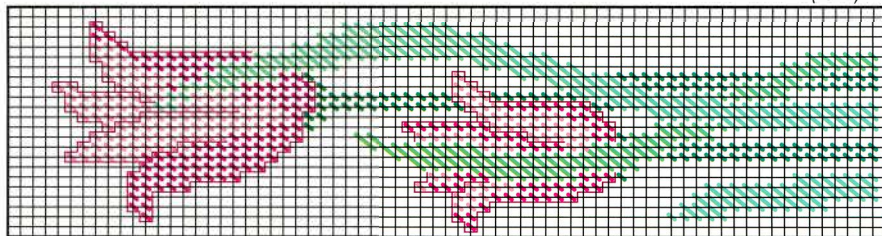
15 x 61 holes
(cut 1)

Color Key

- Clover green
- Apple green
- Mist green
- Cherry blossom pink
- Candy pink
- Wine (backstitch)
- Uncoded area is white

Tote End

23 x 70 holes
(cut 2)



**BUSINESS REPLY MAIL**

FIRST CLASS PERMIT NO. 230 FLAGLER BEACH, FL

POSTAGE WILL BE PAID BY ADDRESSEE

Quick & Easy
crafts**SUBSCRIBER SERVICES**

P.O. Box 420463, Palm Coast, FL 32142-9827

NO POSTAGE
NECESSARY
IF MAILED
IN THE
UNITED STATES

PLEASE SEND MY
FREE
ISSUE TODAY

Yes! Start my no-risk trial subscription to *Quick & Easy Crafts* immediately! If I decide it isn't for me, I'll just write "cancel" on the bill. I'll owe nothing and the issue is mine to keep FREE!

Quick & Easy Crafts ☐ 2 years (12 issues) \$23.97 ☐ 1 year (6 issues) \$12.97
☐ 1 year (Canada) \$17.77

NAME _____

ADDRESS _____

CITY / STATE / ZIP _____

EXPIRES MAY 04 63C25N

Send no money now—we'll bill you later!

IT'S A REALLY **BIG** MAGAZINE!

**68
BIG
PAGES**



100s OF BIG IDEAS

**FREE
ISSUE**

You'll be delighted with the only magazine dedicated to quick and easy-to-make projects for today's busy crafter.

Discover creative patterns and projects galore for plastic canvas, home decorating, embroidery, woodburning, decorative painting, Christmas crafts, dolls, quilting, papier tole, cross-stitch, crochet and more in every issue of *Quick & Easy Crafts*.

- Home Dec Ideas
- Kids' Projects
- Patriotic Designs

Subscribe today and you'll also save 27 percent off the newsstand price! What could be better? Act now!

YES! Sign me up for *Quick & Easy Crafts* magazine right away!

- ☐ 2 years (12 issues) \$23.97 ☐ 1 year (6 issues) \$12.97
☐ 1 year (Canada) \$17.77

NAME _____

ADDRESS _____

CITY / STATE / ZIP _____

EXPIRES 7/93 53025X

Mail to: **Quick & Easy Crafts**
P.O. Box 420463, Palm Coast, FL 32142

Send no money now—we'll bill you later!





Garden Rose Bouquet

Try this classic floral design with 14-count, 18-count and 24-count cloth to make a lovely keepsake set.

By Kathleen Marie O'Donnell

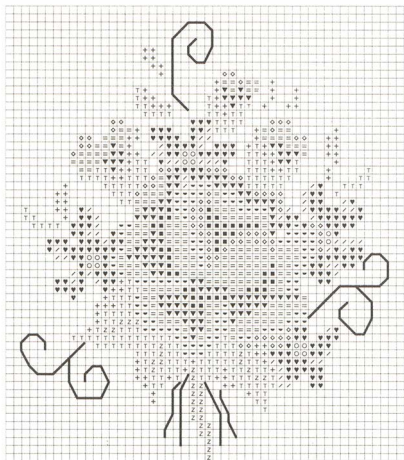
Design Size

45 x 52 stitches

Materials

- 5" x 7" piece 14-count Aida* (for framed piece)
- 4" x 6" oval brass frame
- 6" x 6" piece 18-count Aida* (for porcelain box)
- 5" round pink porcelain box*
- 4" x 4" piece 24-count Aida* (for handbag mirror)
- Round handbag mirror*
- 6-strand embroidery floss*: 1 skein each burgundy #814, red #915, deep rose #3607, medium rose #3608, pink #3609, dark green #991, light green #992, olive gold #3013, yellow #744, light blue #341, and dark blue #3746
- #24 tapestry needle

*Sample was completed with fabric from *Wichelt Imports* and *DMC embroidery floss*. For ordering information on the porcelain box and handbag mirror, see the *Needlecrafters' Nook* on page 4.



Color Key

- Burgundy
- ▼ Red
- Deep rose
- Medium rose
- Pink
- Dark green
- Light green
- Olive gold
- Yellow
- Light blue
- Dark blue
- Backstitch
- Olive gold

Instructions

1. Locate center of fabric piece.
2. Cross-stitch according to graph, using 3 strands floss for 14-count fabric, 2 strands for 18-count fabric, and 1 strand for 24-count fabric.
3. Backstitch remaining areas according to graph.
4. Mount design in appropriate item. ☞

Pearly Pink Jewelry Set

Continued from page 15

pieces wrong sides together, and Whipstitch together with pink ribbon. Make a small loop at top center for earring wires or clips.

4. To make fringe (optional), thread crewel needle with quilting thread and anchor it by weaving beneath ribbon stitching.

5. Bring needle up at right-hand point marked by small triangle on chart. String beads as follows: one old rose, one bugle, one old rose, three crystal, one old rose, three crystal.

6. Reinsert needle at base of second old rose bead, and draw thread up through remaining beads, forming a loop of seven seed beads at bottom. Insert needle through same canvas hole, and pull

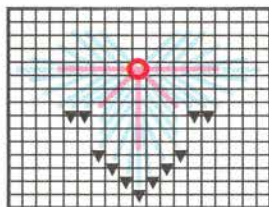
thread gently until no spaces remain between beads. (Do not pull too tight; fringe should have a nice swing.)

7. Bring needle up at next point marked by triangle, and repeat procedure. Work across base of earring, creating a total of 11 strands of fringe.

8. Attach 5mm pink cabochon to front center of each earring.

9. Attach loop at top to ear wire (for pierced earring) or French ear clip (for non-pierced).

10. For variation, omit fringe and loop. Glue to ear post or ear clip. ☞



Pearly Pink Jewelry Set

19 holes x 15 holes

(cut 5: one-7 count, four-14 count)

Color Key

- White
- Pink
- Placement of cabochon
- ▼ Attachment points for fringe on earrings



Easter Party Set

Whether used for hunting Easter eggs or collecting jelly beans, these bright baskets will delight all. The giant Easter egg makes a perfect place mat or door decoration.

See color photo on back cover

By Terry Riccioli

Materials

- 7-count plastic canvas*:
 - 1 sheet yellow
 - 1 sheet blue
 - Scraps of pink
- Plastic canvas yarn*:
 - 20 yards neon pink #0062
 - 20 yards mist green #0040
 - 20 yards lilac #0008
 - 20 yards topaz blue #0018

*Sample projects were completed with Darice plastic canvas and Spinrite plastic canvas yarn.

Instructions

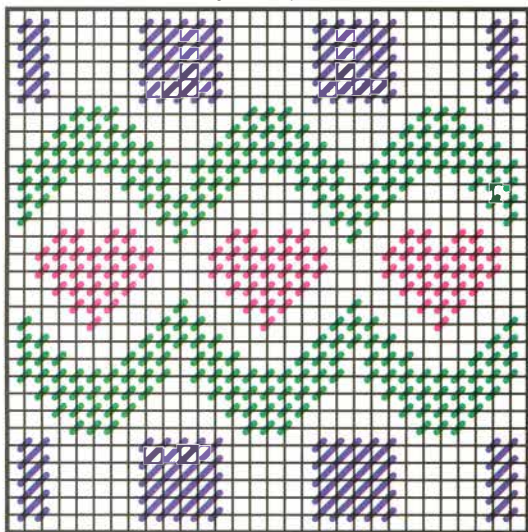
1. Cut place mat from yellow canvas following graph. Fill in design as shown on chart. *Note: Do not run yarn from one motif to another across unstitched canvas. It will show through the unstitched areas.* (This may also be used as a wall or door decoration.)

2. For centerpiece basket, cut four sides and work as shown on chart. Cut one bottom the same size as sides and leave

unstitched. Whipstitch basket sides and bottom together with lilac yarn.

3. For favor basket, cut four sides and stitch as shown. Cut one bottom the same size as side. Cut one handle 2 x 29 holes. Whipstitch sides and bottom together with neon pink. Overcast top of basket, stitching through the holes at the end of the handle and placing the handle in the center of opposite sides. Cut a 10" length each of pink and topaz; thread through top holes of handle. Tie ends in a bow. ☺

Easter Party Centerpiece Basket



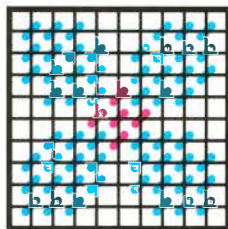
Sides

30 holes x 30 holes
(cut 4)

Color Key

- Lilac
- Mist green
- Topaz blue
- Neon pink

Easter Party Favor Basket



Sides

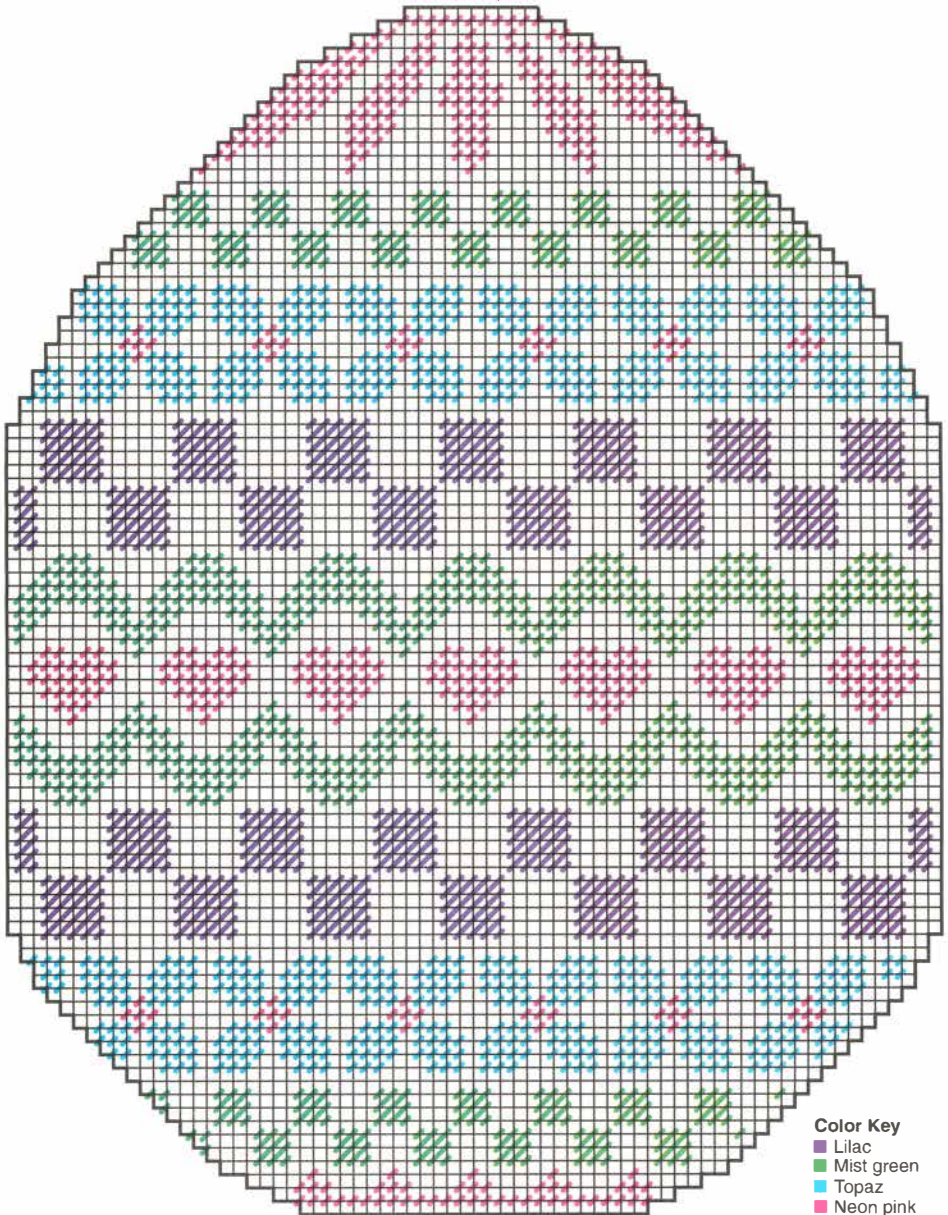
10 holes x 10 holes
(cut 5)

Color Key

- Topaz
- Neon pink

Easter Party Place Mat

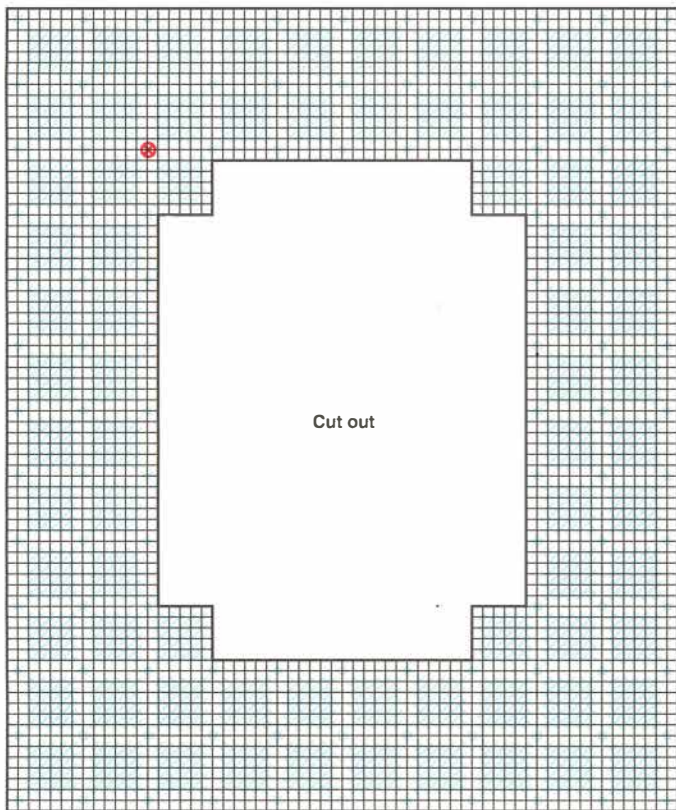
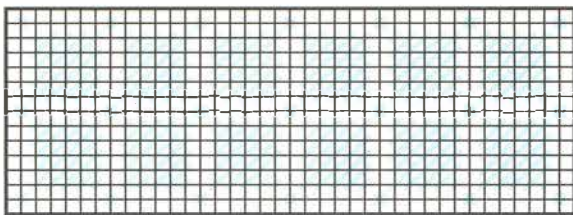
90 holes x 70 holes
(cut 1)



Color Key
■ Lilac
■ Mist green
■ Topaz
■ Neon pink



Sides for Lid
38 holes x 14 holes
(cut 4)



Cut out

Picture Frame
62 holes x 74 holes
(cut 1)



Streamer
2 holes x 27 holes
(cut 2)



Bow
2 holes x 43 holes
(cut 2)

Color Key

White

⊗ Attach streamers
and bow



Spring Basket Bunny

She holds a basket of colorful silk flowers which you can scent for a nice touch.

By Lois Pritzloff

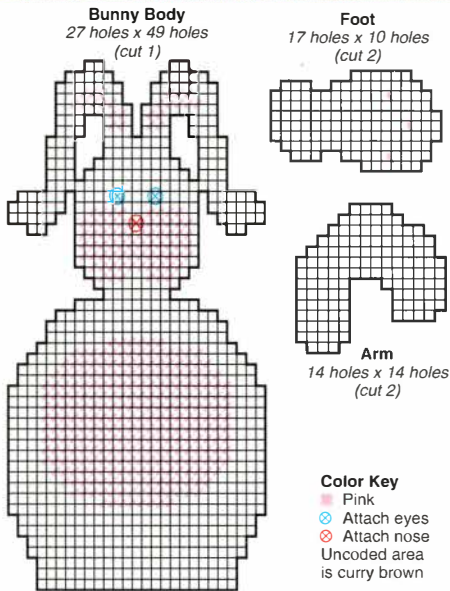
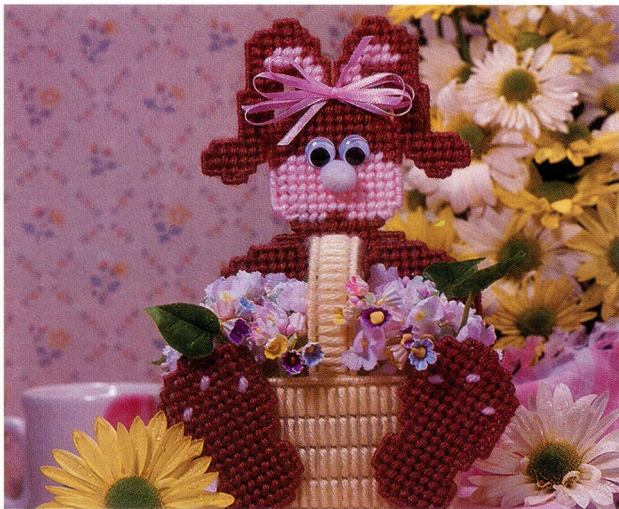
Materials

- 2 sheets 7-count plastic canvas
- Plastic canvas yarn*:
17 yards lemon yellow #0006
10 yards pale pink #0003
25 yards curry brown #0014
- 1" x 1¼" x 3" piece plastic foam*
- 1 pair 12mm eyes*
- ¾" white pompon
- 3 bunches fabric forget-me-nots
- 5 small silk leaves on stiff stems
- 24" ½" pink satin ribbon*
- 5" x 8" pink felt
- Low-temperature glue gun and glue sticks*

**Sample project was completed with Spinrite plastic canvas yarn, Styrofoam plastic foam, Hygloss Products Wiggle Eyes, Wrights ribbon and a Black & Decker 2-Temp Glue Gun and glue sticks.*

Instructions

1. Cut bunny body piece according to graph. Cut two arms and two feet according to graph. For basket, cut two 21 x 13-hole pieces for front and back; two 12 x 13-hole pieces for sides; one 12 x 21-hole piece for bottom; and one 4 x 40-hole piece for handle.
2. Continental-Stitch all bunny parts according to graph, remembering to reverse one arm and one foot. Overcast parts with color of adjacent stitches.
3. Using graph as a guide, cut felt to fit back of bunny and glue in place.
4. Stitch basket using Long Vertical Stitch going over three bars. Stitch handle in the same manner, using Long Horizontal Stitches.
5. Whipstitch basket front, back, sides and bottom together. Overcast basket edge and handle with lemon yellow.
6. Glue plastic foam in basket. With handle crossing the short width of basket, glue ½" of each end inside basket. Glue basket back to base of bunny. Using the photograph as a guide, glue arms in place at the top only. The paws should go around back portion of handle. Glue feet to basket front.
7. Insert flowers in foam, gluing as necessary. Glue eyes in place, overlapping top of cheeks slightly. Glue pompon below eyes. Tie a multilooped bow with ribbon and glue to top of head between ears. ☺



Easter Party Set

Instructions begin on page 28



Made with love by

RETROMAGS

Our goal is to preserve classic video game magazines so that they are not lost permanently.

People interested in helping out in any capacity, please visit us at retromags.com.

No profit is made from these scans, nor do we offer anything available from the publishers themselves.

If you come across anyone selling releases from this site, please do not support them and do let us know.

Thank you!